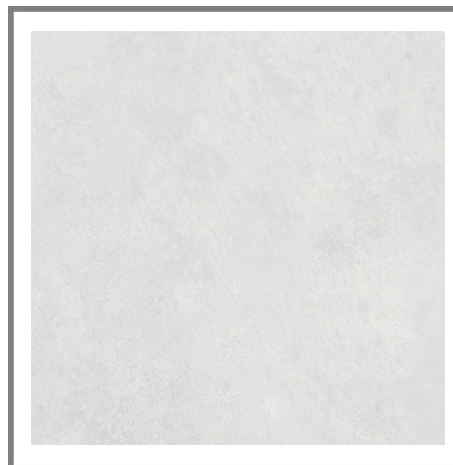


Model: STARK WHITE NAT.120X120(6)(A)
Codes: 100234650 - C221101171
Absorption: Bla - Porcelain tiles ($E \leq 0.1\%$)
Thickness: 7/32 " approx.
Family: STARK
Tone variations: V3



DIMENSIONAL FEATURES

Length	47 7/32 " approx.	
Thickness	7/32 " approx.	
Width	47 7/32 " approx.	
Length and width deviation	Below 0.15%	$\leq 0.5\%*$
Side straightness deviation	Below 0.15%	$\leq 0.5\%*$
Squareness deviation	Below 0.15%	$\leq 0.6\%*$
Surface flatness deviation	Below 0.15%	$\leq 0.5\%*$

MECHANICAL FEATURES

Breaking strenght	> 247,39 LBF	
Modulus of rupture	> 10,12 LBF	
Abrasion resistance	<140	
Crazing resistance	Resists 3 cycles	

HYGIENIC FEATURES

Chemical resistance	CLASE A	
Stain resistance	5	
Resistance to cold food products	APTO	
Resistance to hot food products	APTO	
Dimensional stability at elevated temperature	CUMPLE	

ANTI-SLIP VALUE

Dynamic coefficient of friction	>0.42	
Slip resistance (pendulum-wet)	CL1	
Slip resistance (ramp)	R9-A	
Resistance to bathroom cleaning products	APTO	
Stain resistance	5	
Resistance to cigarette burns	APTO	
4s	DRY>36-LOW WET>24-MODERATE	

SCOPE OF USE

Technical code-1	Use on light traffic floors restricted to pri	
Technical code-2	No additional requirements	

Certified company



A DCOF value of > 0.42 is the new standard for tiles specified for commercial level interior applications expected to be walked upon when wet, in standard A137.1-2012. It replaces the SCOF value of > 0.60 referenced in ADA Guidelines (measurement made as per the ASTM C1028 test method) However, there are many factors that affect the possibility of a slip occurring and then tiles with a DCOF of 0.42 or greater are not necessarily suitable for all projects. The specifier shall determine if tiles are appropriate for specific project conditions, considering by way of example, but not limited to; type of use, traffic, expected contaminants, expected maintenance, expected wear and manufacturer guidelines and recommendations. Tiles with a DCOF inferior to 0.42 shall only be installed when the surface will kept dry when walked upon and proper safety procedures are followed when cleaning the tiles.

A DCOF value of > 0.42 is the new standard for tiles specified for commercial level interior applications expected to be walked upon when wet, in standard A137.1-2012. It replaces the SCOF value of > 0.60 referenced in ADA Guidelines (measurement made as per the ASTM C1028 test method) However, there are many factors that affect the possibility of a slip occurring and then tiles with a DCOF of 0.42 or greater are not necessarily suitable for all projects. The specifier shall determine if tiles are appropriate for specific project conditions, considering by way of example, but not limited to; type of use, traffic, expected contaminants, expected maintenance, expected wear and manufacturer guidelines and recommendations. Tiles with a DCOF inferior to 0.42 shall only be installed when the surface will kept dry when walked upon and proper safety procedures are followed when cleaning the tiles.

PACKING

Boxes	31 SQF/CS	
Pallets	806 SQF/PAL	
Units	15,5 SQF/ST	

ADDITIONAL NOTES

éviter les accès directs de l'extérieur si aucun dispositif de protection contre les apports abrasifs n'est prévu

Certified company



A DCOF value of > 0.42 is the new standard for tiles specified for commercial level interior applications expected to be walked upon when wet, in standard A137.1-2012. It replaces the SCOF value of > 0.60 referenced in ADA Guidelines (measurement made as per the ASTM C1028 test method) However, there are many factors that affect the possibility of a slip occurring and then tiles with a DCOF of 0.42 or greater are not necessarily suitable for all projects. The specifier shall determine if tiles are appropriate for specific project conditions, considering by way of example, but not limited to; type of use, traffic, expected contaminants, expected maintenance, expected wear and manufacturer guidelines and recommendations. Tiles with a DCOF inferior to 0.42 shall only be installed when the surface will kept dry when walked upon and proper safety procedures are followed when cleaning the tiles.

A DCOF value of > 0.42 is the new standard for tiles specified for commercial level interior applications expected to be walked upon when wet, in standard A137.1-2012. It replaces the SCOF value of > 0.60 referenced in ADA Guidelines (measurement made as per the ASTM C1028 test method) However, there are many factors that affect the possibility of a slip occurring and then tiles with a DCOF of 0.42 or greater are not necessarily suitable for all projects. The specifier shall determine if tiles are appropriate for specific project conditions, considering by way of example, but not limited to; type of use, traffic, expected contaminants, expected maintenance, expected wear and manufacturer guidelines and recommendations. Tiles with a DCOF inferior to 0.42 shall only be installed when the surface will kept dry when walked upon and proper safety procedures are followed when cleaning the tiles.