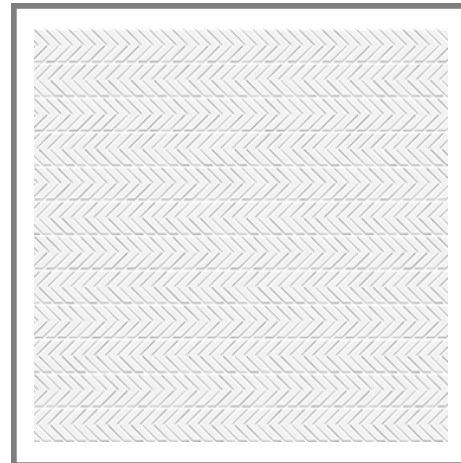


**Model:** SYDNEY PEARLS 33,3X100(A)  
**Codes:** 100214491 - V14402681  
**Water absorption:** BIII - Wall tiles ( $10\% \leq E \leq 20\%$ )  
**Thickness:** 11/32 " approx.



### DIMENSIONAL FEATURES

Thickness	11/32 " approx.	
Width	13 3/32 " approx.	
Length	39 11/32 " approx.	
Length and width deviation	Below 0.15%	$\leq 0.5\%*$
Side straightness deviation	Below 0.15%	$\leq 0.5\%*$
Squareness deviation	Below 0.15%	$\leq 0.6\%*$
Surface flatness deviation	Below 0.15%	$\leq 0.5\%*$

### MECHANICAL FEATURES

Breaking strength	265,61 LBF	$>600\text{ N}*$
Abrasion resistance	No Aplica	
Crazing resistance	Resists 3 cycles	

### HYGIENIC FEATURES

Chemical resistance	Class "A" for swimming pools and cleaning products (resists attack). Minimum Class "B" for acids and bases	CLASE B Min. *
Stain resistance	Class 5. Easy cleaning with water	CLASE 3 Min. *

### SCOPE OF USE

Technical code-1	Use on walls	
------------------	--------------	--

### ANTI-SLIP VALUE

Friction (dry)	No Aplica	
Friction (wet)	No Aplica	

### PACKING

Boxes	10,75 SQF/CS	
Pallets	591,42 SQF/PAL	
Units	3,58 SQF/ST	

System Certification

