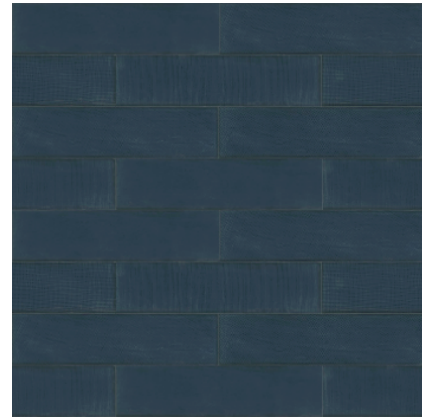


Model: TOUCH NAVY**Codes:** 100213767 - L138001081**Group:** G-226**Format:** 2 15/16" X 11 13/16" X 5/16" approx.**Thickness:** 5/16 " approx.

RECOMMENDATIONS

Recommended adhesive	100043280 TIXOCEM PLUS	
Recommended joint	100236409 COLORSTUK ANTRACITA N	
Recommended joint (wet area)	100236409 COLORSTUK ANTRACITA N	
Recommended adhesive (wet area)	100043280 TIXOCEM PLUS	

DIMENSIONAL FEATURES

Length and width deviation	Longitud 0.1%/Anchura: 0.27%	UNE-EN-ISO 10545-02*
----------------------------	------------------------------	----------------------

FEATURES

-  Material with surface with the ability to produce reflections.
-  Material suitable for use on shower walls.
-  Material suitable for use on indoor walls.
-  Material that stands out for having an asymmetrical surface.

ADDITIONAL NOTES

Note	Each box contains flat pieces and pieces with the various textures in a random percentage.	
------	--	--

PHYSICAL PROPERTIES

Water absorption	13.7%	UNE-EN-ISO 10545-03*
Coefficient of linear thermal expansion	$5.5 \cdot 10^{-6}$ mm/(mm·°C)	UNE-EN-ISO 10545-08*
Crack resistance	No visible effects.	
Flammability	A1	UNE-EN 13501-1*
Flexural strength	5.7 Mpa	UNE-EN-ISO 10545-04*

CHEMICAL PROPERTIES

Stain resistance	CLASE 5	UNE-EN-ISO 10545-14*
Resistance to chemicals	Sin efectos visibles	UNE-EN-ISO 10545-13*

PACKING

Boxes	5,33 SQF/CS	
Pallets	639,38 SQF/PAL	
Units	0,24 SQF/ST	
Sale unit	M2	
Base unit	PIECES	
Net weight	29,98 LB/M2	
Gross weight	30,86 LB/M2	