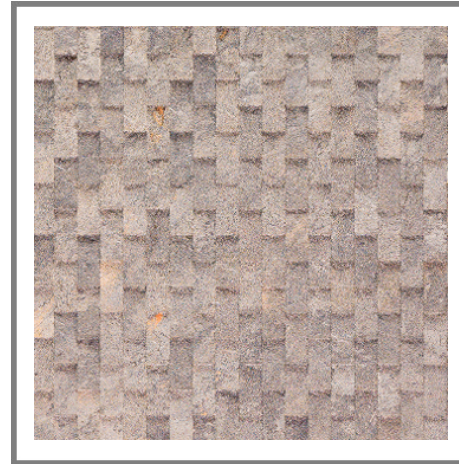


**Model:** DECO MIRAGE CREAM 33,3X100(A)

**Codes:** 100202065 - V14402591

**Water absorption:** BIII - Wall tiles ( $10\% \leq E \leq 20\%$ )

**Thickness:** 15/32 " approx.



### DIMENSIONAL FEATURES

Thickness	15/32 " approx.	
Width	13 3/32 " approx.	
Length	39 11/32 " approx.	
Length and width deviation	Below 0.15%	$\leq 0.5\%*$
Side straightness deviation	Below 0.15%	$\leq 0.5\%*$
Squareness deviation	Below 0.15%	$\leq 0.6\%*$
Surface flatness deviation	Below 0.15%	$\leq 0.5\%*$

### MECHANICAL FEATURES

Breaking strength	361,64 LBF	$>600\text{ N}*$
Abrasion resistance	No Aplica	
Crazing resistance	Resists 3 cycles	

### HYGIENIC FEATURES

Chemical resistance	Class "A" for swimming pools and cleaning products (resists attack). Minimum Class "B" for acids and bases	CLASE B Min. *
Stain resistance	Class 5. Easy cleaning with water	CLASE 3 Min. *

### SCOPE OF USE

Technical code-1	Use on walls	
------------------	--------------	--

### ANTI-SLIP VALUE

Friction (dry)	No Aplica	
Friction (wet)	No Aplica	

### PACKING

Boxes	10,75 SQF/CS	
Pallets	591,42 SQF/PAL	
Units	3,58 SQF/ST	

System Certification



Do not use cleaning agents containing hydrofluoric acid.

It is recommended to fix tiles with a minimum joint of 1,5 mm. Do not fix without joint.

For big sizes, it is recommended to fix with mortars containing polymeric additives and to use the double glueing technique.

Mosaic tiles must be grouted.

This document is only commercial and cannot be used as expert opinion, documentary evidence or in any legal or administrative procedure unless authorized by PORCELANOSA S.A.