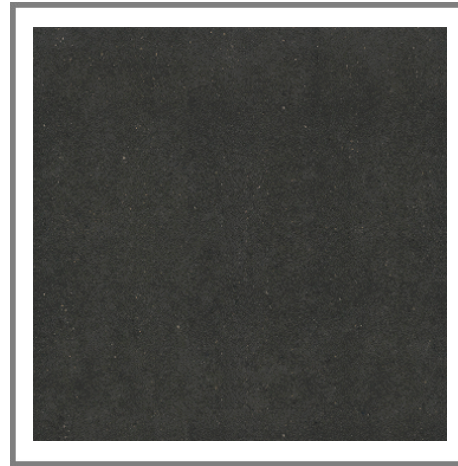


Model: AVENUE BLACK TEXTURE 59,6X59,6(A)
Codes: 100138102 - C226000321
Water absorption: Bla - Porcelain tiles ($E \leq 0.1\%$)
Thickness: 13/32 " approx.
Family: AVENUE
Tone variations: V3
Finish: TEXTURE



DIMENSIONAL FEATURES

Thickness	13/32 " approx.	
Width	23 7/16 " approx.	
Length	23 7/16 " approx.	
Length and width deviation	Below 0.15%	$\leq 0.5\%*$
Side straightness deviation	Below 0.15%	$\leq 0.5\%*$
Squareness deviation	Below 0.15%	$\leq 0.6\%*$
Surface flatness deviation	Below 0.15%	$\leq 0.5\%*$
Thickness tolerance	5 DMM	

MECHANICAL FEATURES

Breaking strength	> 629,72 LBF	>292 LBF*
Abrasion resistance	<130	
Qb-upec (c)	2	
Qb-upec (e)	3	
Qb-upec (p)	4+	
Qb-upec (u)	4	

HYGIENIC FEATURES

Stain resistance	Class 5. Easy cleaning with water	CLASE 3 Min. *
Chemical resistance	Class "A" for swimming pools and cleaning products (resists attack). Minimum Class "B" for acids and bases	CLASE B Min. *

ANTI-SLIP VALUE

Friction (dry)	0.72	
Friction (wet)	0.65	
Slip resistance (ramp)	R11-B	
Slip resistance (pendulum-dry)	>65	
4s	DRY>36-LOW WET>36-LOW	

Certified company



SCOPE OF USE

Technical code-1	Use on heavy traffic floors
------------------	-----------------------------

PACKING

Boxes	15,29 SQF/CS
Pallets	489,39 SQF/PAL
Units	3,82 SQF/ST

Certified company



A DCOF value of > 0.42 is the new standard for tiles specified for commercial level interior applications expected to be walked upon when wet, in standard A137.1-2012. It replaces the SCOF value of > 0.60 referenced in ADA Guidelines (measurement made as per the ASTM C1028 test method) However, there are many factors that affect the possibility of a slip occurring and then tiles with a DCOF of 0.42 or greater are not necessarily suitable for all projects. The specifier shall determine if tiles are appropriate for specific project conditions, considering by way of example, but not limited to; type of use, traffic, expected contaminants, expected maintenance, expected wear and manufacturer guidelines and recommendations. Tiles with a DCOF inferior to 0.42 shall only be installed when the surface will kept dry when walked upon and proper safety procedures are followed when cleaning the tiles.

A DCOF value of > 0.42 is the new standard for tiles specified for commercial level interior applications expected to be walked upon when wet, in standard A137.1-2012. It replaces the SCOF value of > 0.60 referenced in ADA Guidelines (measurement made as per the ASTM C1028 test method) However, there are many factors that affect the possibility of a slip occurring and then tiles with a DCOF of 0.42 or greater are not necessarily suitable for all projects. The specifier shall determine if tiles are appropriate for specific project conditions, considering by way of example, but not limited to; type of use, traffic, expected contaminants, expected maintenance, expected wear and manufacturer guidelines and recommendations. Tiles with a DCOF inferior to 0.42 shall only be installed when the surface will kept dry when walked upon and proper safety procedures are followed when cleaning the tiles.

22/11/2019