

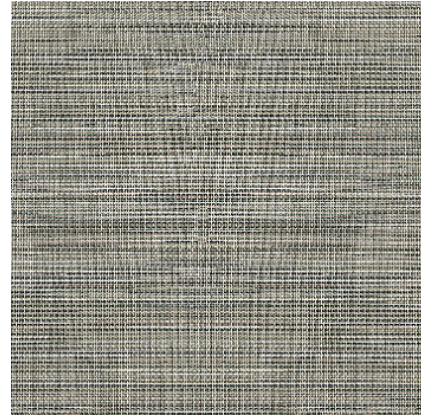
Model: LINKFLOOR CONTRACT COTTON

Codes: 100126707 - L167012128

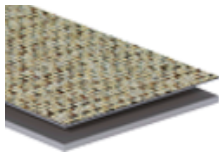
Group: G-252

Format: 36 1/32" X 12" X 7/32" approx.

Thickness: 7/32 " approx.



COMPOSITION



	Size	Material	Type of material
Layer 1	1	Vinyl	Vinyl fabric made up of a polyester core encapsulated in a vinyl solid
Layer 2	4	PVC	Hard PVC

FEATURES



Weaved material.



Water-and-moisture resistant floor, suitable for wet areas such as bathrooms and kitchens



5 year warranty for commercial use valid for vinyl materials that have been installed in rooms where they are exposed to normal wear and tear for their recommended End Use Category in accordance with ISO 10582.



Floor capable of dissipating excess electrical charges and distribute them over its entire surface



Installation system where gluing the boards to the floor is not necessary. They are installed on a foam and joined together



15 year home use warranty valid for vinyl materials that have been installed in rooms where they are exposed to normal wear and tear for their recommended End Use category in accordance with ISO 10582.



Is suitable for installing on water radiant heating



Safety and joint durability are the main features of this easy installation system that guarantees the elimination of gaps between boards throughout the floor's lifetime. The pressure exerted between boards reinforces the union and prevents it from being carried out incorrectly.

DIMENSIONAL FEATURES

Length of face	≤2 mm	EN 427*
Item thickness	±0.25 mm	EN 428*
Width of face	±0.1% MM	EN 427*

LABORATORY TESTS

Commercial area class	33	EN 10582*
Slip resistance (r)	R-10	DIN 51130*
Abrasion resistance	0.068 mm/1.80 mm ³	EN 660-1,2*
Impact resistance	7.4 Kgf/mm ²	EN 1534*
Resistance to staining	Grado 5 (Grupo 1, 2 y 3)	EN 438*
Resistance to cigarette burns	Clase 1	EN 438-2*
Castor chair effect	No damage %	
Swelling in thickness	0%	EN 317*
Dimensional stability	-0.15% MM	EN 434*
Formaldehyde emissions	E1	EN 717*
Slip resistance (cls)	Clase 2	EN 12633*
Fire resistance	Bfl-s1	EN 13501*
Evaluation of propensity to accumulation of electrostatic charges	≤2 kV	EN 1815*
Heat resistance	0.06 M ² *K/W	EN 12664*
Fungus test	Grado 1	ASTM G21:96*
Uv light fastness	≥Grado 8	ISO 105*
Asymmetry/arch effect	≤2%	EN 427*
Residual footprint	7.4 Kgf/mm ²	EN 1534*
Curvature	0.2 mm	EN 434:1994*
Acoustic insulation	ΔLw=16 dB	EN ISO 717-2*
Flexibility	10 mm	EN 435*
Dynamic coefficient of friction	Clase DS	ANSI 137.1*
Private area class	23	EN 10582*

PACKING

Boxes	21,03 SQF/CS	
Pallets	1261,65 SQF/PAL	
Units	3 SQF/ST	
Sale unit	M2	
Base unit	PIECES	
Square meters	1 M2	
Net weight	16,08 LB/M2	
Gross weight	16,99 LB/M2	

SPECIAL PIECES

SAP	KEA	Description	Group	Boxes	Pallet	Units	SKU	Basic Unit	Net weight	Gross weight
100174756	L167012669	ESP. PERF ADH LINKFLOOR ALUMINIO 3,5X270	G-121	10 ST/CS	1000 ST/PAL	10 ST/M2	ST	ST		
100128267	L167901793	ZOCALO ALUMINIO 8X225	G-121	12 ST/CS	696 ST/PAL	5 ST/M2	ST	ST	1 KG/ST	1 KG/ST