

Model: CODE COAL NATURE 100X300 (3+)(A)

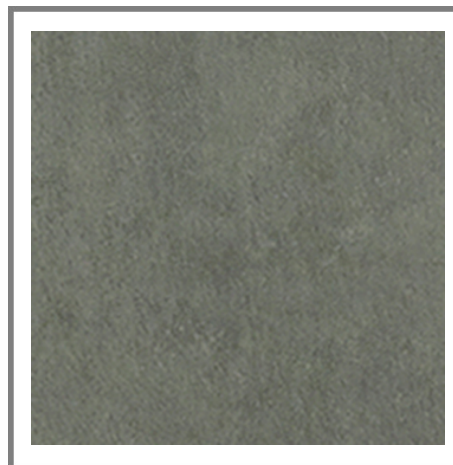
Codes: 100124127 - C226500441

Absorption: Bla - Porcelain tiles ($E \leq 0.1\%$)

Thickness: 1/8 " approx.

Family: CODE

Tone variations: V3



DIMENSIONAL FEATURES

Length	118 3/32 " approx.	
Thickness	1/8 " approx.	
Width	39 11/32 " approx.	
Length and width deviation	Below 0.15%	$\leq 0.5\%*$
Side straightness deviation	Below 0.15%	$\leq 0.5\%*$
Squareness deviation	Below 0.15%	$\leq 0.6\%*$
Surface flatness deviation	Below 0.15%	$\leq 0.5\%*$

MECHANICAL FEATURES

Modulus of rupture	> 9 LBF	
Abrasion resistance	<140	
Crazing resistance	Resists 3 cycles	

HYGIENIC FEATURES

Chemical resistance	CLASE A	
Stain resistance	5	
Resistance to cold food products	APTO	
Resistance to hot food products	APTO	
Dimensional stability at elevated temperature	CUMPLE	

ANTI-SLIP VALUE

Resistance to bathroom cleaning products	APTO	
Stain resistance	5	
Resistance to cigarette burns	APTO	

Certified company



SCOPE OF USE

Technical code-1	Use on walls
Technical code-2	No additional requirements

PACKING

Boxes	1 ST/CS
Pallets	20 ST/PAL

Certified company



A DCOF value of > 0.42 is the new standard for tiles specified for commercial level interior applications expected to be walked upon when wet, in standard A137.1-2012. It replaces the SCOF value of > 0.60 referenced in ADA Guidelines (measurement made as per the ASTM C1028 test method) However, there are many factors that affect the possibility of a slip occurring and then tiles with a DCOF of 0.42 or greater are not necessarily suitable for all projects. The specifier shall determine if tiles are appropriate for specific project conditions, considering by way of example, but not limited to; type of use, traffic, expected contaminants, expected maintenance, expected wear and manufacturer guidelines and recommendations. Tiles with a DCOF inferior to 0.42 shall only be installed when the surface will kept dry when walked upon and proper safety procedures are followed when cleaning the tiles.

A DCOF value of > 0.42 is the new standard for tiles specified for commercial level interior applications expected to be walked upon when wet, in standard A137.1-2012. It replaces the SCOF value of > 0.60 referenced in ADA Guidelines (measurement made as per the ASTM C1028 test method) However, there are many factors that affect the possibility of a slip occurring and then tiles with a DCOF of 0.42 or greater are not necessarily suitable for all projects. The specifier shall determine if tiles are appropriate for specific project conditions, considering by way of example, but not limited to; type of use, traffic, expected contaminants, expected maintenance, expected wear and manufacturer guidelines and recommendations. Tiles with a DCOF inferior to 0.42 shall only be installed when the surface will kept dry when walked upon and proper safety procedures are followed when cleaning the tiles.