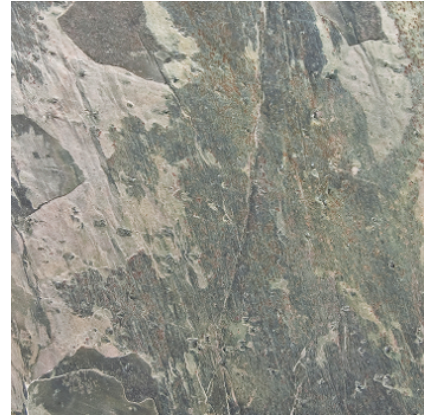


Model: KATHMANDU PULIDO**Codes:** 100086260 - L107000131**Group:** G-255**Format:** 15 3/4" X 31 1/2" approx.**Thickness:** 9/16 " approx.

RECOMMENDATIONS

Recommended adhesive	100031189 SUPER-ONE N GRIS	
Recommended joint	100236464 COLORSTUK RAPID MANHATTAN N	
Recommended joint (wet area)	100236464 COLORSTUK RAPID MANHATTAN N	100086920 FILA FOB EXTREME
Recommended adhesive (wet area)	100031189 SUPER-ONE N GRIS	

ADDITIONAL NOTES

Due to the texture of the slates, it is important that when they are grouted we try to cover the least amount of the pieces so as to make subsequent cleaning easier and prevent the joint from staying between the different textures.

TOLERANCES

Indoor tolerance	±4 mm (ancho), ±4 mm (largo), ±3 mm (espesor)	UNE-EN 1341:2013*
------------------	---	-------------------

LABORATORY TESTS

Bulk density	2675 Kg/m ³	UNE EN 1936:2007*
Water absorption at atmospheric pressure	0.21%	UNE-EN 13755:2002*
Slip resistance	18/46	UNE-EN 14231:2004*
Flammability	A1f I/A1	UNE-EN 13501-1:2007+A1:2010*
Frost resistance	17.9 MPa	UNE-EN 12371:2011*
Resistance to thermal shock	-0.03%/7.9%	UNE -EN 16140:2011*
Resistance to abrasion (except g.7-8)	18 mm	UNE-EN 14157:2005*
Slip resistance (dcof)	0.27	ASTM C1028*
Flexural strength	22 MPa	UNE-EN 12372:2007*

FEATURES



Protection that reduces the appearance of the most common domestic bacteria.



There are considerable color changes between pieces.



Material from an Asian country.



Material suitable for use on indoor walls.



Material with surface with the ability to produce reflections.



Material suitable for use on shower walls.



Material suitable for use on indoor floors.

PACKING

Boxes	3,44 SQF/CS	
Pallets	268,67 SQF/PAL	
Units	3,44 SQF/ST	
Sale unit	M2	
Base unit	PIECES	
Net weight	90,45 LB/M2	
Gross weight	92,4 LB/M2	

